



**Implio®**

TIGHT. CROSS-TRADE. CERTIFIED.

EN

# WINDOW AND DOOR INTEGRATION SYSTEMS

Wood fibre-based solutions for permanently secure  
windows and doors in all exterior walls and any type of building

— | Retail



A system solution from

**GUTEX®**  
NATURALLY MADE FROM WOOD

# SMART WINDOW AND DOOR INTEGRATION FOR ALL TYPES OF BUILDINGS

New builds, modernisation projects, rendered or rainscreen façades: the wood fibre-based Implio P and Implio F window and door systems include everything you need to ensure perfect long-term protective sealing. They place the work required in the hands of a single master tradesman, reducing the risk of potential structural damage caused by wind or rain as well as the labour involved.

In addition, you benefit right from the planning stage, because Implio is like pulling a certified system solution out of a hat – complete with design proposals, tender documents, and advice from our application engineering experts.

Implio P and Implio F were developed together with industry partners as innovative additions to our Thermowall ETICS and Durio façade insulation systems.

## BENEFITS

- › Certified system performance according to ift guidelines
- › Double rain and wind tightness
- › Resistant to wind and driving rain
- › Minimised risk of structural damage
- › Quick installation integrating all trades
- › Reduced planning requirements
- › Technical advice as required
- › Made in Germany, recyclable

## Implio® P

### Customisable complete system with two levels of sealing

Obtaining reliably tight joints in a façade is a formidable challenge. This is especially true for windows, where up to four trades are involved – the window contractor, the sun and privacy protection expert, the woodworker or renderer, and the metalworker or stonemason.

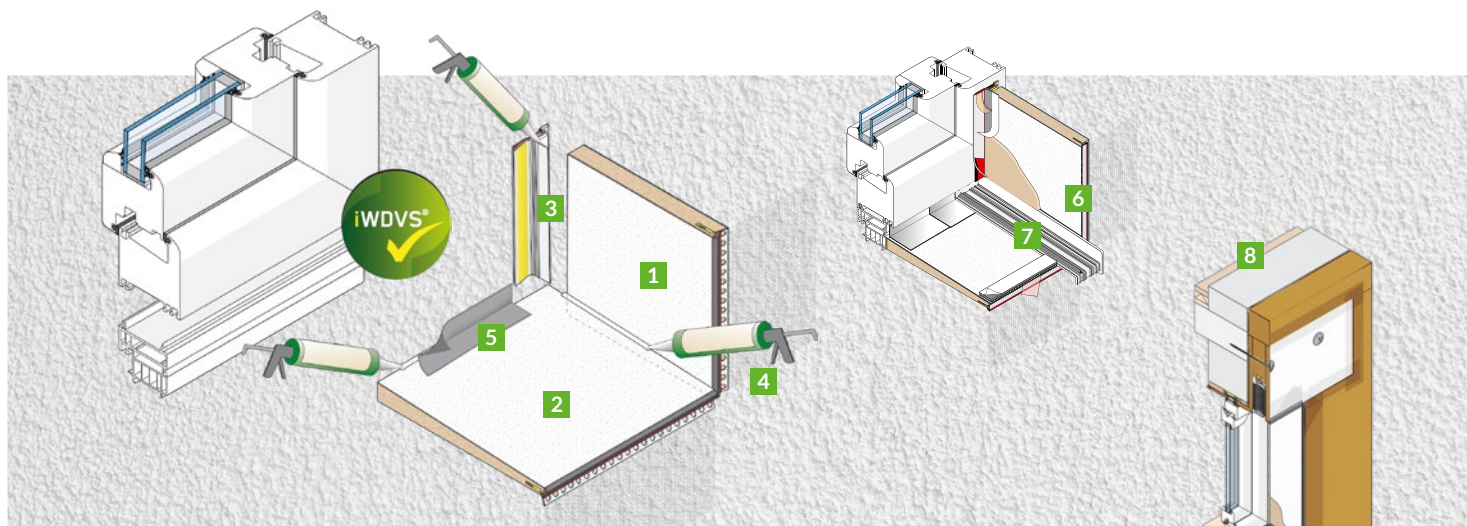
Implio P is a complete system including

- › reveal and ledge insulation for double rain and wind tightness
- › roller shutter and sunshade housings

### IMPLIO P BENEFITS

- › Two independent levels of sealing
- › Customisable, maximally prefabricated components
- › Reduced work for rendered façades

The system, which has been certified in accordance with ift guidelines, comprises reveal and ledge insulation for double rain and wind tightness, as well as optional roller shutter and sunshade housings. With two independent levels of sealing and a particularly durable stop bead in the ledge insulation, it offers an increased safety reserve with regard to the elements and installation tolerances. Thanks to maximum prefabrication, Implio P can be processed quickly and efficiently. It also reduces the amount of work required for rendered façades: install the panel, fit the corner brackets and window bead, reinforce the reveal – all done by mounting the reveal insulation.

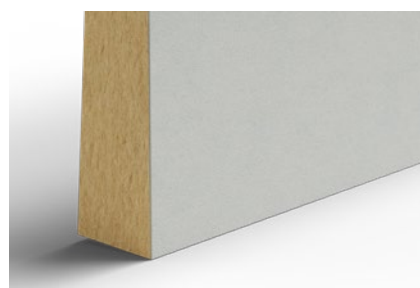


- |  |  |
|--|--|
| <ul style="list-style-type: none"> <li>1 GUTEX Implio P reveal insulation</li> <li>2 GUTEX Implio P ledge insulation</li> <li>3 GUTEX Implio P weatherproofing channel</li> <li>4 GUTEX Implio caulking</li> <li>5 GUTEX Implio P corner joint tape</li> </ul> | <ul style="list-style-type: none"> <li>6 GUTEX Implio ledge cover corner underlay or GUTEX Implio plastic bracket</li> <li>7 GUTEX Implio P vent channel (as applicable)</li> <li>8 GUTEX Implio P sunshade housing, as required with sunshade housing connector (as applicable)</li> <li>➤ GUTEX Implio P sunshade housing (as applicable)</li> </ul> |
|--|--|

### Special membrane coverings for rendered and rainscreen façades

Implio P is generally used with a white membrane covering as a standard solution for rendered façades. For rainscreen façades, Implio P02 is available in black or light grey, without channel bead or mesh. Further solutions can be found from page 6.

We supply the ledge insulation with a light grey membrane covering, which heats up less when exposed to sunlight. The black membrane covering of the reveal insulation is diffusible and adheres very well to the underlayment. It also looks better with an open joint.



White membrane covering for rendered façades



Light grey membrane covering for rainscreen façades

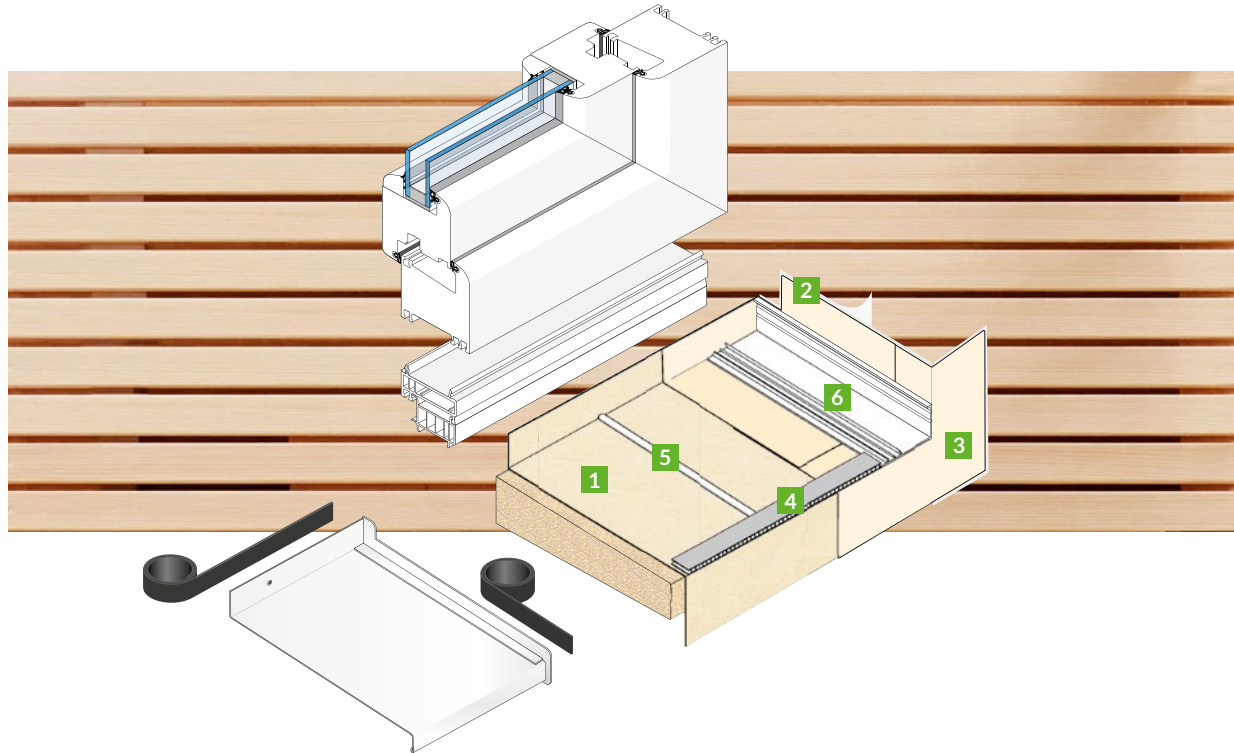


Black membrane covering for rainscreen façades



# Implio® F

**Certified standard system for all types of façade**



**1** GUTEX Implio F ledge insulation and moisture barrier

**2** GUTEX Implio F left/right window corner

**3** GUTEX Implio F wall corner

**4** GUTEX Implio vent channel

**5** GUTEX Implio caulking

**6** GUTEX Implio plastic bracket or GUTEX ledge cover corner underlay

› GUTEX Implio F primer

› GUTEX Implio F adhesive tape (as applicable)

## IMPLIO F BENEFITS

- › Reduction to the essential components
- › Standardised design thanks to standardised components
- › Reduced workload for rainscreen façades

Implio F comprises the essential components for perfect door and window installations, which you receive in standardised form. The equally standardised design puts the system in the hands of a single trade. Implio F therefore reduces the risk of potential structural damage caused by wind or rain as well as the work involved – particularly with rainscreen façades. The integrated self-adhesive film makes installation very easy. Particularly in the case of thin reveal depths, e.g. when using the insulation board face as a reveal, you benefit from the space-saving handling and concentration on the lower joint of the opening.



# THE RIGHT SOLUTION FOR YOUR PROJECT

## ✓ Implio® P

### Extremely distinctive and dependable

- › Certified complete system with reveal and ledge insulation for double rain and wind tightness as well as roller shutter and sunshade housings (optional)
- › Custom solutions, detailed building-specific solutions on request
- › Efficient installation due to maximum prefabrication
- › Reduction in number work steps for rendered façades from four to one
- › Increased safety reserves with regard to installation tolerances or weathering
- › Long outdoor exposure, also for rendered façades



## ✓ Implio® F

### Extremely economical and universal

- › Certified, safe, economical universal solution for all façade types
- › Reduced to the essential components
- › Few standardised work steps, especially for rainscreen façades
- › Including 3D-prefabricated self-adhesive window and façade corners
- › Ideal even for thin reveal depths



## CUSTOM SOLUTIONS

Implio P and Implio F satisfy the requirements for most windows. If your needs are unusual, however, we have custom solutions available:

- › Implio P custom solutions with the suffix -01 are white for rendered façades.
- › Implio P custom solutions with the suffix -02 are black or light grey for rainscreen façades.

Implio F is suitable for both rendered and rainscreen façades in slightly different versions.

### Implio P102

#### Complete system for rainscreen façades with all window integration components.

Maximum safety level due to partial double sealing. Optionally available with sunshade or roller shutter housing. Also ideal for the Durio façade insulation system.

#### Components

- › GUTEX Implio P02 reveal insulation
- › GUTEX Implio P02 ledge insulation
- › GUTEX Implio P weatherproofing channel
- › GUTEX Implio caulking
- › GUTEX Implio P joint tape and corner joint tape
- › GUTEX Implio ledge cover corner underlay or GUTEX Implio plastic bracket
- › GUTEX Implio P02 sunshade housing with sunshade housing connector (as applicable)
- › GUTEX Implio P02 roller shutter housing (as applicable)
- › GUTEX Implio P vent channel (as applicable)

| Potential applications   | Implio P           | Implio F        | Implio P401        |
|--|--------------------|-----------------|--------------------|
| <b>Rendered façade</b>   |                    |                 |                    |
| with reveal insulation, without sunshade track   | ●●                 | ●● <sup>3</sup> | ○                  |
| with reveal insulation and installed sunshade track or aluminium-clad window <sup>1</sup>                              | ●                  | ○               | ●●                 |
| with reveal insulation and Implio sunshade system  | ●●                 | ●● <sup>3</sup> | ●●                 |
| without reveal insulation  | ○                  | ●● <sup>3</sup> | ○                  |
| <b>Rainscreen façade</b>   | <b>Implio P102</b> | <b>Implio F</b> | <b>Implio P402</b> |
| with reveal insulation, without sunshade track   | ●●                 | ●● <sup>4</sup> | ○                  |
| with reveal insulation and installed sunshade track or aluminium-clad window <sup>2</sup>                              | ●                  | ○               | ●●                 |
| with reveal insulation and Implio sunshade system  | ●●                 | ●● <sup>4</sup> | ●●                 |
| without reveal insulation, without sunshade track  | ○                  | ●● <sup>4</sup> | ○                  |
| without reveal insulation, with installed sunshade track, Implio sunshade system or aluminium-clad window <sup>2</sup> | ○                  | ●● <sup>4</sup> | ○                  |
| ●● well suited   ● partially suited   ○ unsuited   |                    |                 |                    |

<sup>1</sup> without render/weather protective coating under the sunshade track/aluminium cladding, connection at frame

<sup>2</sup> Connection at frame

<sup>3</sup> Weather protection provided by all-over render in the reveal, if available also behind the sunshade track/aluminium cladding

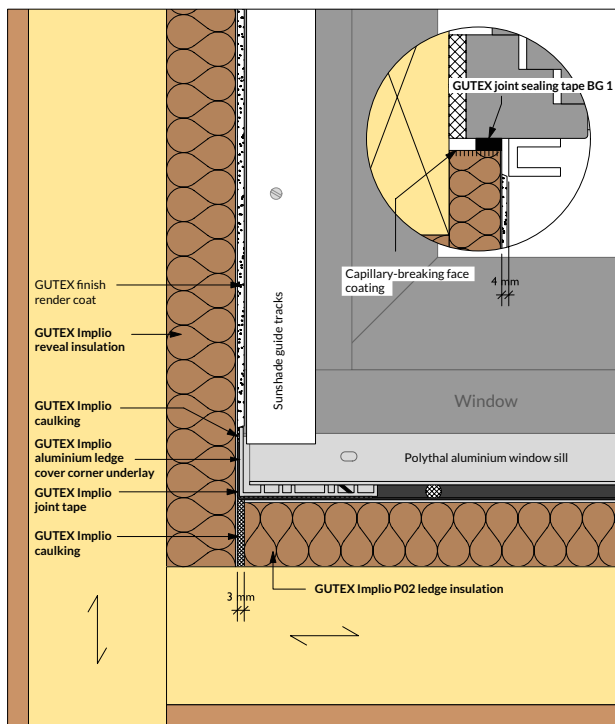
<sup>4</sup> Weather protection provided by all-over cladding in the reveal, if available also behind the sunshade track/aluminium cladding



## Implio P401 and Implio P402

### System solutions for windows with pre-installed sunshade guide tracks

Since sunshade guide tracks prevent installation of the Implio P weatherproofing channel, connect the Implio P or Implio P02 reveal insulation with a suitable joint sealing tape and face-side brush-on sealant.



## Implio P401

### System solution for rendered façades

#### Components

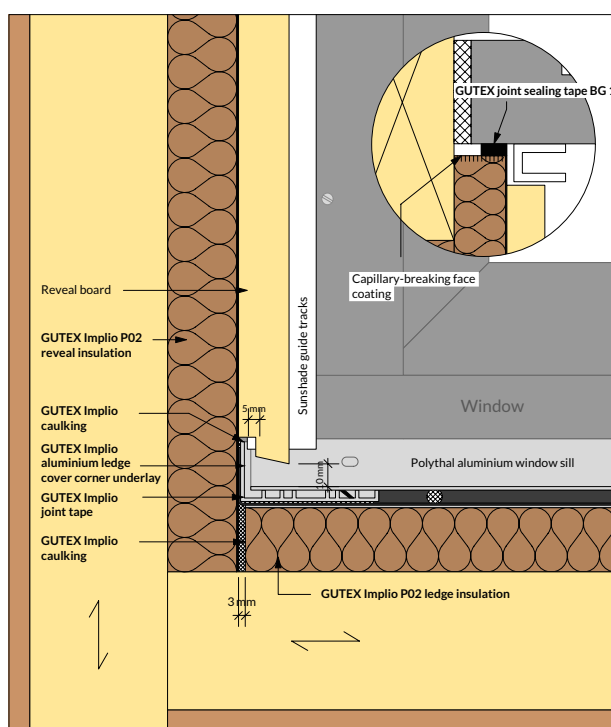
- › GUTEX Implio P reveal insulation
- › GUTEX Implio reveal insulation coating of face sides with brush-on sealant or GUTEX brush-on sealant for coating of the face
- › GUTEX Implio P ledge insulation
- › GUTEX Implio caulking
- › GUTEX Implio P joint tape and corner joint tape
- › GUTEX Implio ledge cover corner underlay or GUTEX Implio plastic bracket
- › GUTEX Implio P vent channel (as applicable)

## Implio P402

### System solution for rainscreen façades

#### Components

- › GUTEX Implio P02 reveal insulation
- › GUTEX Implio reveal insulation coating of face sides with brush-on sealant or GUTEX brush-on sealant for coating of the face
- › GUTEX Implio P02 ledge insulation
- › GUTEX Implio caulking
- › GUTEX Implio P joint tape and corner joint tape
- › GUTEX Implio ledge cover corner underlay or GUTEX Implio plastic bracket
- › GUTEX Implio P vent channel (as applicable)



## Implio P sunshade system

The Implio P sunshade system was jointly developed by iWDVS partner companies GUTEX and LAKAL. It consists of a GUTEX sunshade housing and a matching LAKAL roller shutter or sunshade unit.



*GUTEX Implio P sunshade housing*



*LAKAL sunshade unit*

### Benefits

- › Reliable overall system resistant to driving rain, as window integration is completely independent of the roller shutter or sunshade unit
- › Unrestrictedly ETICS-compliant wood fibre housing
- › Easy-to-assemble roller shutter and sunshade unit for installation from a single source
- › Installation of the unit after completion of all sealing and rendering work, thus preventing soiling and damage
- › Maintenance or replacement possible without problems even after completion
- › Housing and roller shutter or sunshade are ordered using a single form
- › Available for all common window dimensions



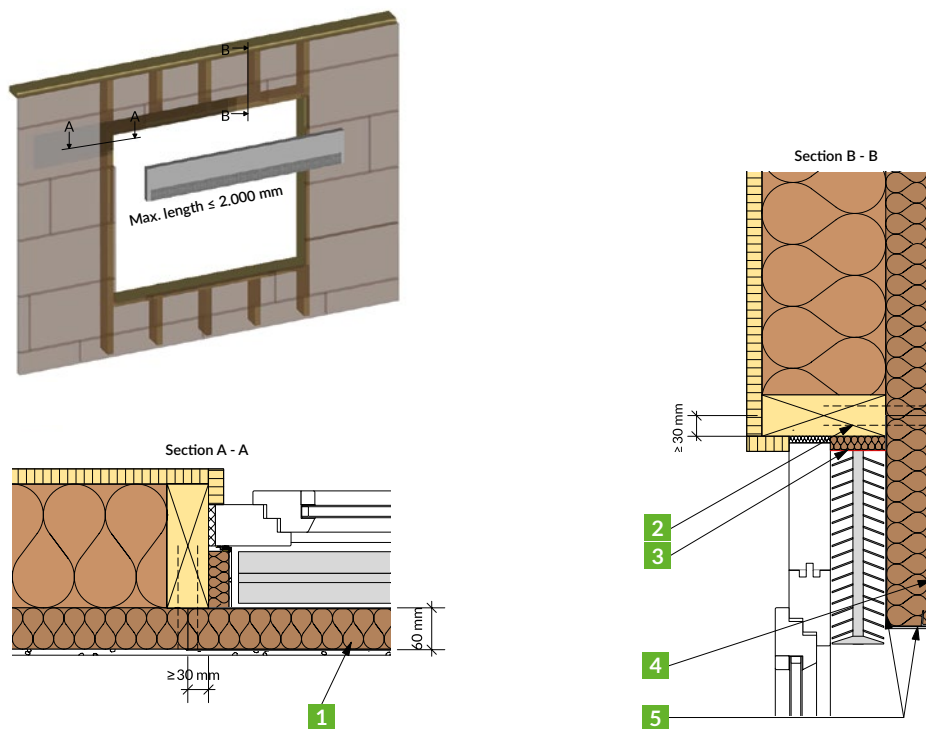


## Rivestio cladding panel

The Rivestio cladding panel is part of the Implio system solution and can be used on flat substrates and in timber frame construction. The panel is both an economical and extremely stable solution, as it is covered on both sides – in charcoal on request. Thanks to the integrated mesh, the render connection is easy: combined cladding panel and façade insulation allow you to render over the ETICS façade without any restrictions.

### Benefits

- › Significantly easier to cut than pre-rendered boards
- › Custom prefabrication possible
- › Thinner design than conventional shades
- › Highly efficient, as no final treatment is required on the inside
- › Render connection detail requires no additional bead or stop bead



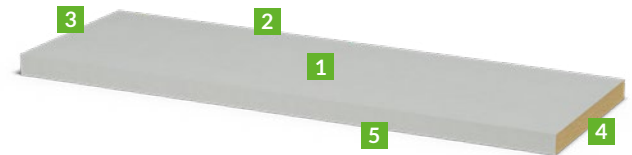
- 1 Rivestio cladding panel bonded on face side with GUTEX Implio caulking
- 2 GUTEX Thermowall wood screw/stainless steel spine clamp
- 3 GUTEX brush-on sealant
- 4 GUTEX render system
- 5 Implio P membrane covering

## Implio P rear panel

The rear panel is the counterpart to the Rivestio cladding panel, and is used to insulate the rear panel of sunshade or roller shutter housings. The panel is very economical because its white covering means that it already has a finished surface: There is no need to paint it.

### Surface finishes

- 1** Membrane covering
- 2 – 4** No membrane covering
- 5** Membrane covering
- None Stop bead and mesh



## Implio P base reveal insulation

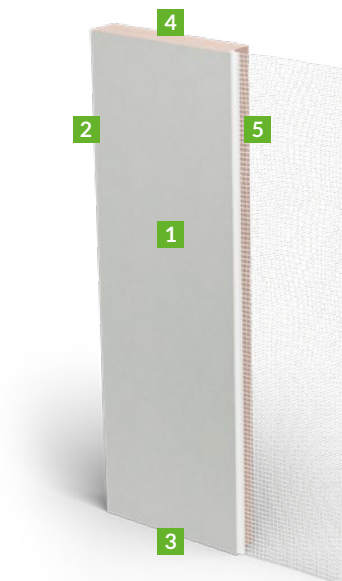
The Implio P base reveal insulation made of moisture-resistant XPS is used exclusively in splash water areas. It enables Implio P windows and doors to be installed at ground level – even in the case of plinth recesses in the façade.

### Panel material

XPS

### Surface finishes

- 1** Membrane covering
- 2 – 4** No membrane covering
- 5** Stop bead and mesh



**NEW**

## Implio P combination reveal insulation

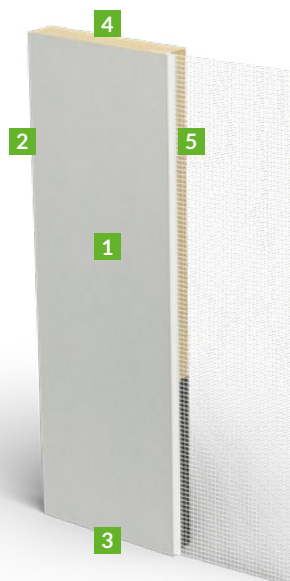
The Implio P combination reveal insulation allows you to use the system in splash water areas without joints throughout: It combines an XPS component at the bottom with a wood fibre component at the top. The two individual panels are glued together at the factory, then given a full white covering and fitted with a channel bead.

### Panel material

Soft wood fibre on top, XPS on bottom,  
glued at the factory and white throughout  
Length of XPS component 330 mm

### Surface finishes

- 1** Membrane covering
- 2 – 4** No membrane covering
- 5** Stop bead and mesh

**NEW**

## Implio P base ledge insulation

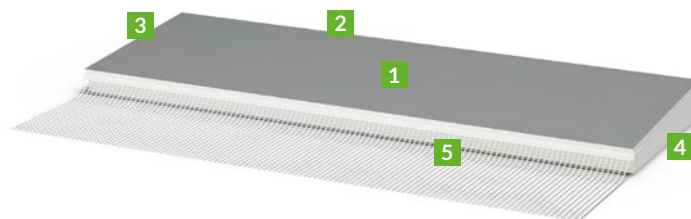
The base ledge insulation completes the Implio P system solution in the splash water area. It is made of moisture-resistant recycled PET and is so pressure-resistant that you can install walk-on window sills on it. Its processing corresponds to the standard Implio P ledge insulation.

### Panel material

Recycled PET

### Surface finishes

- 1** Grey P02 membrane covering
- 2 – 4** No membrane covering
- 5** Stop bead and mesh



# IMPLIO BENEFITS



System reliability



Durable weather protection



Lasting value



Extremely economical



Certified quality



Sustainability



Service

## GUTEX is a member of the iWDVS® engineering network



The German iWDVS® engineering network aims to facilitate cooperation between companies and across trades, primarily for the purpose of developing new, advanced system solutions. iWDVS® solutions such as Implio are tested in their installed systems. Certificates issued by qualified institutions (e.g. ift-Rosenheim) give property developers, architects, and tradespersons the assurance that both the components and the entire system solution will perform exactly as specified.

## OUR PRODUCT AND SERVICE RANGE LABELLING



Roof



Wall



Interior

*Your dealer/adviser*

 **GUTEX®**  
NATURALLY MADE FROM WOOD

CANNIS GROUP COMPLET s.r.o.

Litvínovice 119 | 370 01 České Budějovice, CZECH REPUBLIC

Phone: + 420 602 759 917 | [www.gutexczech.com](http://www.gutexczech.com) | [info@gutexczech.com](mailto:info@gutexczech.com)

*Knowing you've  
done the right thing.  
That's the  
GUTEX effect.*



THE  
**GUTEX  
EFFECT**

Note: Subject to misprints, changes, and errors. This brochure reflects the current state of development of our products and remains valid until a new version is published. Products are not necessarily suitable for use in all situations. Upon delivery, warranty and liability are governed by our general terms and conditions of business.

Image credits: © GUTEX; Creativemarc/iStock; pamyol/iStock; Florian Fundk; Martin Granacher

Last updated  
05/2021