

# THE INTERIOR INSULATION SYSTEM BACKED BY VALIDATION

The high-quality choice for superior thermal  
insulation and comfortable dwelling

Retail



## Exploit this business opportunity

### Interior insulation that is a system – a highly viable alternative for energy refurbishment

Usually, in Europe, energy refurbishment with insulation takes place in conjunction with the renewal of exterior building wall faces, typically using ETIC systems. However, insulating systems, such as GUTEX' Intevio® that install on interior faces of walls offer homeowners, occupants and developers many distinct advantages. As a plasterer, you, too, can easily benefit when you install this system. Sometimes such a system is the only means of energy refurbishment, for example when:

- › Structural features, accessibility; other features; exterior building face design or building codes or regulations, such as setback requirements, etc. make exterior insulation impossible.
- › Flexibility in insulation thickness is necessary (minimum thermal insulation as per DIN 4108).
- › A specific space requires refurbishment within limited time or in conjunction with scheduled events, such as changing of tenants, etc.
- › Very fast heating of spaces used infrequently, such as churches, holiday cottages, sport venues, municipal or event halls is required.

### Intevio® – The first interior insulation system with RAL quality seal

Wood fibre insulation and clay or lime plaster are perfect mates. All three perform superbly in terms of diffusion openness, humidity buffering and active transport of moisture, which explains why they constitute an extremely effective interior insulation system when it comes to condensation management.

The RAL seal of quality verifies that Intevio® meets the highest quality standards, which is possible thanks to its longevity, sustainability and performance dependability, as well as its ecological compatibility and biological safeness.

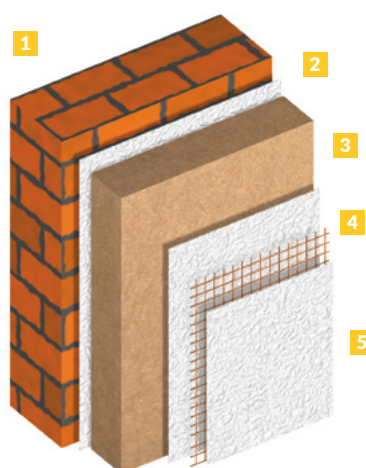
- |   |  |
|---|--|
| <b>1</b> Masonry                        | <b>4</b> Base coat w. reinforcement mesh |
| <b>2</b> Equalisation and adhesive coat | <b>5</b> Final render                    |
| <b>3</b> GUTEX Thermoroom®              |  |



### A joy to install

Common woodworking tools, manual and power, are all it takes to install Intevio® wood fibre insulation boards, which readily cut to size with a jig or circular saw. And the boards are both compression-resistant and soft, making them easy to process. Are they susceptible to breaking or cracking? In comparison to most other insulation boards, no!

If you prep the substrate suitably prior to adhering the boards across their full surface, mechanical fastening is usually unnecessary. Possible exceptions are cavities with heights exceeding 3.8 metres or substrates, such as half-timbered structures, that are subject to significant movement. These applications require mechanical fastening.





## Safe and sound

Mould and mildew thrive on cold surfaces in buildings. Intevio® raises interior wall surface temperature significantly. Add this to the combined effect of the insulation's diffusion-open composition and system plasters and you have a very strong defence against mould and mildew – even if regular ventilation is rare.



## Affordable and worthwhile

Besides being easy and quick to install, Intevio® comes priced to compete. This means the system is not just ecological, but attractive for you to sell, allowing you to sell your customers energy refurbishment upgrades whose price and efficiency pay back investments quickly.

## Upgrade efficiency ecologically

GUTEX Thermoroom®-wood fibre insulation boards comply with the strict guidelines established by natureplus® for biological safeness. natureplus® is the international quality seal for interior furnishings and building products that obtain certification as sustainable, biologically safe, environment-friendly in use and manufacturing and are functionally sound.



## Noticeable energy savings

Heating today constitutes a major portion of utility expenses for living space. And it's increasing. Intevio® gives your customers an effective means to reverse this trend.

- › Even installing thin insulation can reduce the loss of thermal energy via external walls by around 66 percent.
- › Improvements in insulation combined with its relatively low expense mean the investment pays for itself within just a few years.

Interior Thickness [mm]	New U-value [W/m²K]	Loss [Litres Oil p.a.] [m³ Gas p.a.]	Savings [Litres Oil p.a.] [m³ Gas p.a.]	Savings [%]
0	2.0	1,960	0	0
40	0.667	653	1,307	67
60	0.50	490	1,470	75
100	0.333	327	1,633	83

*Savings indicated here have been derived using specified conditions and design calculations provided by GEG (German energy efficiency standard).*

### Example using:

*Single-family house, existing wall, area 140 m², U-value 2.0 W/m²K*

### INSULATE INTERIOR WALLS WITH THERMOROOM® AND BENEFIT FROM DEPENDABLE EFFICIENCY

- › Quick and easy to install
- › Economical
- › Compliant with best practice building science guidelines
- › Superior protection against mould and mildew
- › Provides a pleasant indoor climate year round
- › Significantly reduced heating costs
- › Biologically safe and resource conserving wood fibre insulation
- › First interior insulation system to receive RAL quality seal

# INTEVIO® ADVANTAGES



Pleasant indoor climate



Ideal acoustic insulation



Insulation in summer



Insulation in winter



Systems deliver greater dependability



Sustainability



Service

## Intevio® is the first interior insulation system with RAL quality seal

For products to receive the RAL seal of quality, they must meet more than just the highest quality standards. In addition, they must display a uniquely high degree of sustainability and health safety as well as exceptional customer and service orientation. Regular audits, performed by GUTEX and independent institutes assure the products' continued compliance with the RAL quality terms and stipulations.

### OUR PRODUCT AND SERVICE DESIGNATIONS



Roof



Wall



Interior

**For technical questions:**

**E-mail: [info@gutexczech.cz](mailto:info@gutexczech.cz)**



CANNIS GROUP COMPLET s.r.o.

Litvínovice 119 | 370 01 České Budějovice, CZECH REPUBLIC

Phone: + 420 602 759 917 | [www.gutexczech.com](http://www.gutexczech.com) | [info@gutexczech.com](mailto:info@gutexczech.com)

**Knowing you've  
done the right thing.  
That's the  
GUTEX effect.**



THE  
**GUTEX  
EFFECT**