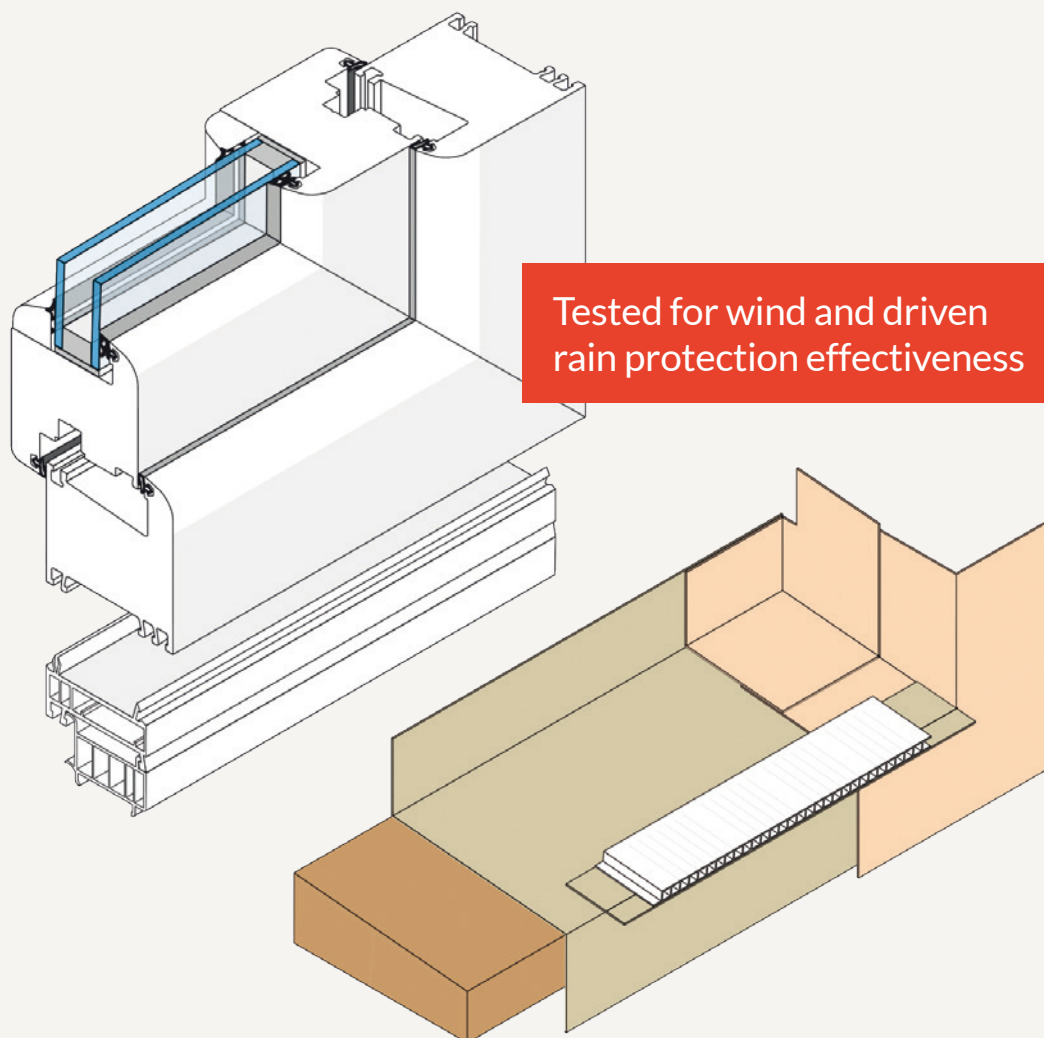


## Installation Instructions

# GUTEX IMPLIO<sup>®</sup>-F

Double the rain and wind tightness of your rainscreen (vented facade)



# GUTEX Implio®-F system components

## Double wind and rain tightness

GUTEX Implio®-F features a cleverly designed system with hightech underlayment to double the system's tightness against wind and wind-driven rain. The self-adhesive components make installation quick and easy. And the system is ideal for just about any type of insulated rainscreen, especially those with thinner insulation layers.

Insulation and tight containment of water all in one. Implio®-F comes with an ideally pitched (5°) ledge insulation board with integral vapour-diffusion permeable, water-tight underlay. It also includes primer, drip tape, pre-compressed foam joint tape, vent channel and adhesive window and wall corners.

### System Components

- 1

GUTEX Implio®-F Folienkeilplatte (ledge insulation and moisture barrier)
- 2

GUTEX Implio®-F Primer
- 3

GUTEX Implio®-F Fassadenecke (wall corner)
- 4

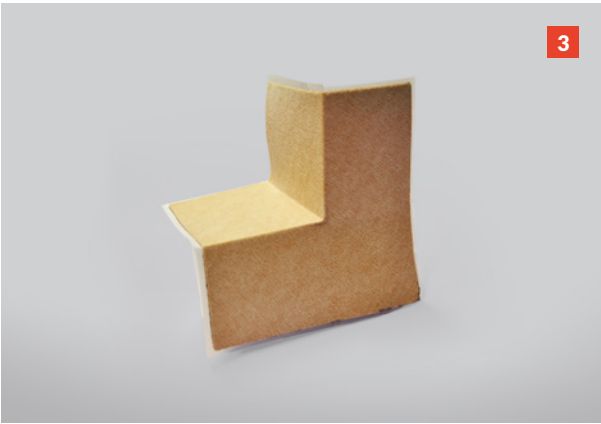
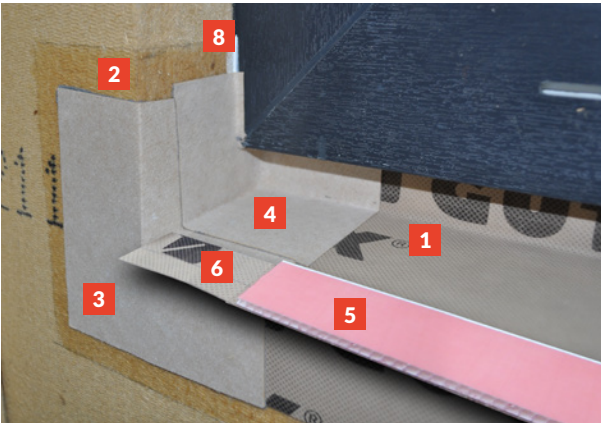
GUTEX Implio®-F Fensterecke (window corner)
- 5

GUTEX Implio®-F Hinterlüftungsprofil (vent channel)
- 6

GUTEX Implio®-F Tropfband (drip tape)
- 7

GUTEX Implio®-F Kopplungsband (joint tape)
- 8

GUTEX Implio® Dichtkleber (caulking)



# GUTEX Implio®-F Planning Guidelines

## General



1 German regulations (German DIN 4108, Part 10 WAB / WAP) stipulate that BG1 Fugendichtband (pre-compressed sealing tape) must be installed between all window-insulation joints, and that window openings must have 90° corners. The four reveal side surfaces must be uniformly even and suitable to accommodate render. We suggest you make sure the insulation has approval for your render.

2 Always make sure that all substrates are uniformly surfaced, smooth, dry

and free of dust, oil and adhesion-inhibiting substances. If necessary, you may use a suitable cleaning medium that is commonly available.

3 To accurately figure the height, you'll have to consider the dimensions of the different elements, such as the GUTEX Implio® Bordprofil (ledge cover end pieces)/Kunststoffwinkel (plastic angle) and the Keilplatte (ledge insulation). The table and detail below provide information and guidance. "D" stands for the distance from the bottom of the rough window opening to the window

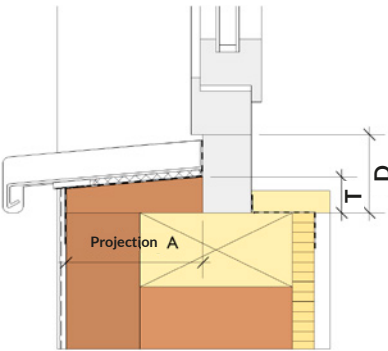
frame and "T" stands for the thickness of the Folienkeilplatte.

To ensure that GUTEX Implio®-F provides long-lasting, reliable performance, it is necessary to seal windows, doors and similar elements in accordance with current standards to prevent undesired movement.

Relevant national and industry guidelines and regulations stipulated by the applicable trade associations apply, such as those for woodworking, plastics, metal and glass.

Thickness Folienkeilplatte (ledge insulation and moisture barrier) Depth: Folienkeilplatte (ledge insulation and moisture barrier)	30 mm thick (100 - 300 mm)	40 mm thick (< 300 - 400 mm)
GUTEX Implio® Bordprofil (aluminium ledge cover corner underlay)	Distance = 65 - 70 mm	Distance = 75 - 80 mm
GUTEX Implio® Kunststoffwinkel (plastic angle) L-shape / U-shape	Distance = 70 - 75 mm	Distance = 80 - 85 mm

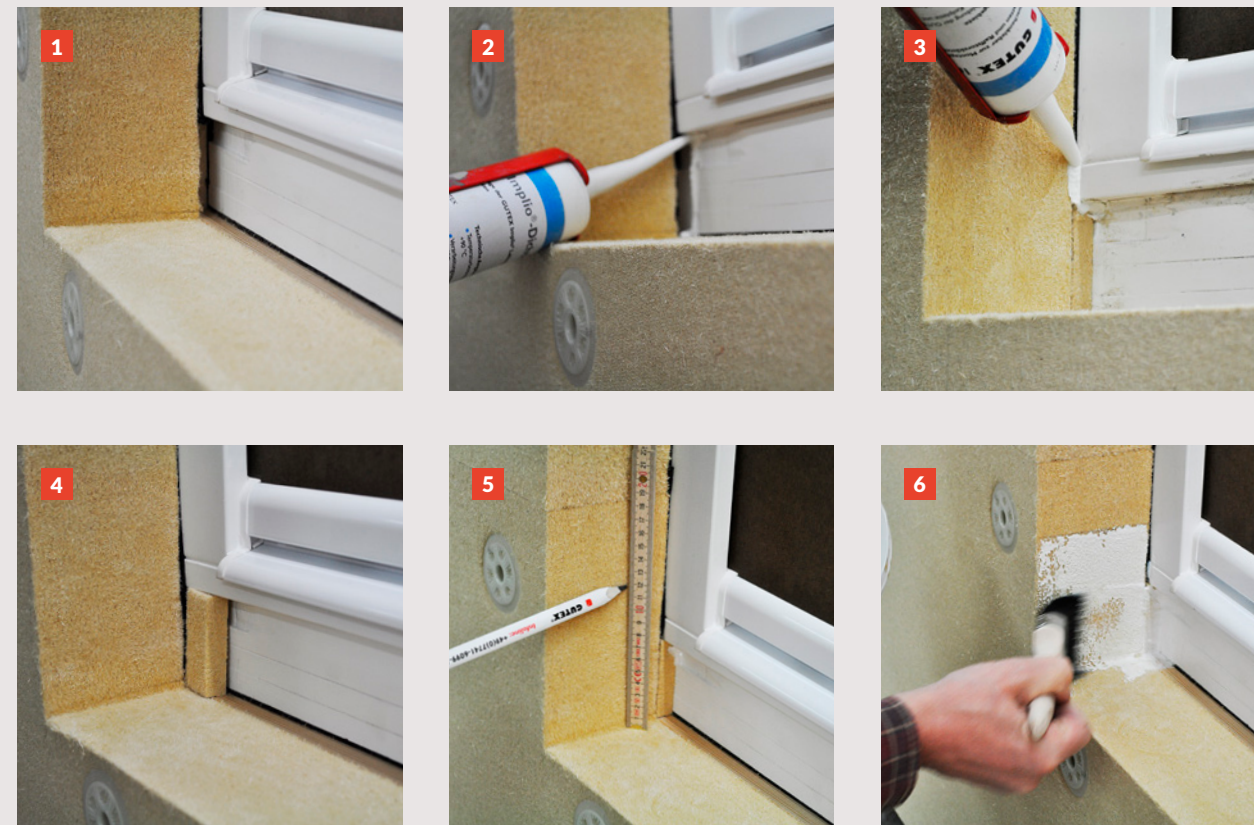
Table 1  
The lowest values shown above are possible only when all the components are kept to an absolute minimum of thickness and installed to keep depth at a minimum.





## GUTEX Implio®-F Installation Instructions

### Prepping Existing Structure and Components



**1** Joints with adjacent elements of the building must be tightly sealed against driving rain and wind. (GUTEX Fugendichtband BG1 is highly effective.) Fill the joints between the reveal insulation and the ledge insulation as well as between the ledge, window frame, and render bead completely with GUTEX Dichtkleber adhesive caulking.

**2 - 4** Fill the space between the two inner bottom edges of the side reveal on either side and the window frame with a piece of insulation board sized to install flush with the reveal insulation sideboards. Apply sufficient GUTEX Implio® Dichtkleber around the inner perimeter of the space and ledge and then apply to all adjacent joints. After

this is completed, insert the piece of insulation into the space.

**5 + 6** Apply GUTEX Implio®-F Primer to cover about 60 mm outward from both the entire ledge and 120 mm high from the ledge corner along the reveal on the exterior building face, while coating the side reveal surfaces up to 120 mm in height. Use a suitable paint brush. We suggest masking out the window frame with an appropriate tape. Allow sufficient time to dry.

#### NOTE

Make sure if you are installing aluminium-clad windows that the seal takes place on the wood frame and not the metal cladding. Push the

reveal insulation boards past the metal cladding until they butt up against the wood frame. This is possible only if the wood frame is wider than the metal cladding, which means a joint will be visible. Our suggestion: 30 mm minimum of protection over the frame. GUTEX will gladly provide a custom solution at your request.

Joints with adjacent elements of the building must be tightly sealed against driving rain and wind.

Insulation edges and surfaces require protection against dampness, such as GUTEX Streichdichtung brush-on sealant.

## GUTEX Implio®-F Installation Instructions

### Priming and Adhering the Keilplatte



**1 + 2** The primer changes colour visibly when it dries, becoming brown and slightly transparent, which permits you to check coverage and readiness.

**3** You need to specify Implio® -F Folienkeilplatte to the size you require when you order, using the order form. Depending on the length of your ledge(s) they can be cut to size to fit individually or to butt to other segments in order to reach the needed length.

Apply a 6 - 8-mm bead of GUTEX Implio® Dichtkleber to the underside of the Folienkeilplatte keeping it 50 - 60 mm from the back edge.

**4** You may also apply the Dichtkleber to the back edge so it adheres to the understructure below the window frame.

#### NOTE

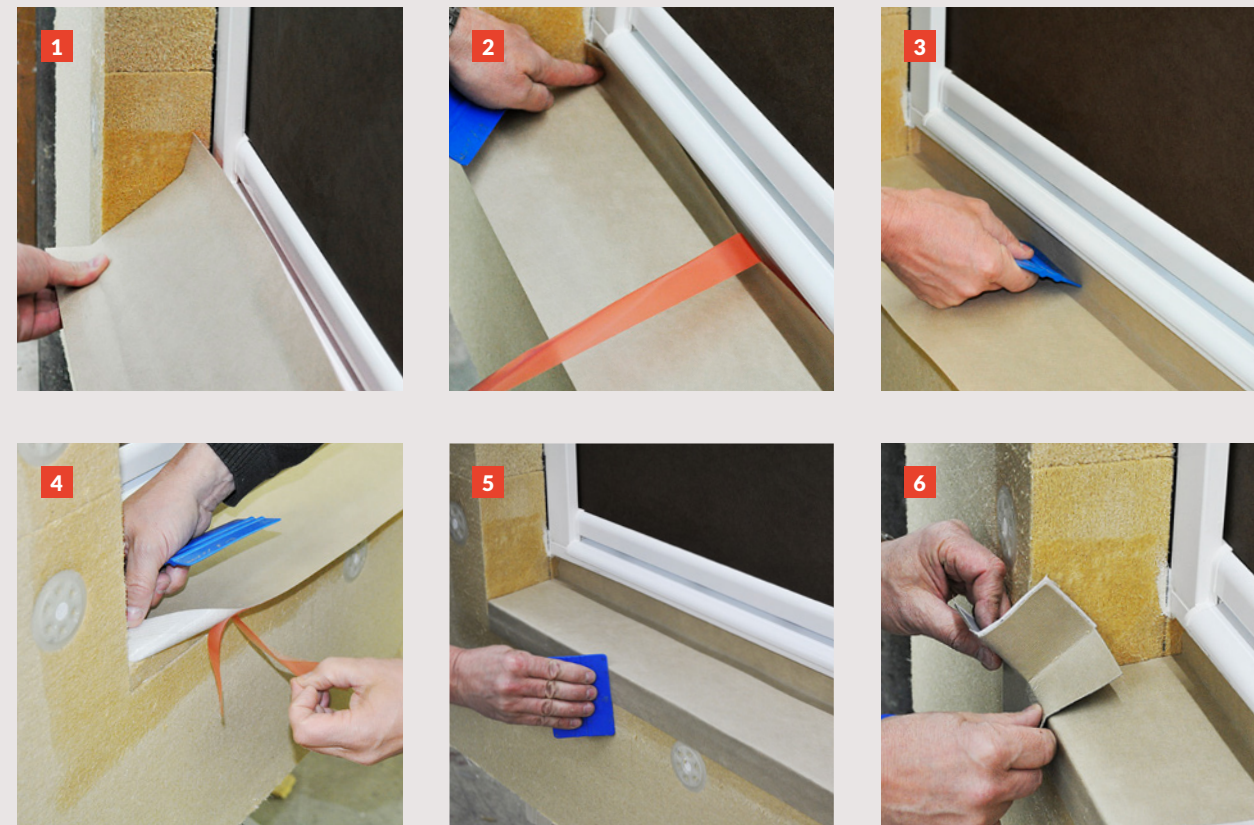
You may butt Folienkeilplatte boards together, but will need to use the 50-mm Kopplungsband to seal the joints.

Please pay careful attention to the ledge insulation board's height, adhesive thickness and distance to the rough window opening.



## GUTEX Implio®-F Installation Instructions

### Installing and Adhering



**1** Place the Folienkeilplatte in its position and press firmly on the Implio® Dichtkleber, while adjusting its fit.

**2** Remove the adhesive backer from the strip adjacent to the window and press the moisture barrier so it smoothly adheres to the window frame.

**3** Use a thin, flat piece of plastic to smooth out any potential air pockets and ensure uniform adhesion. Begin at the bottom joint, in the middle, and work upwards and outwards.

**4 + 5** Now, adhere the outward edge of the Folienkeilplatte, removing the backing and using your flat object to press out the air and smoothly adhere the sticky back of the moisture barrier membrane to the primed insulation board. Work from the middle outwards, smoothing as you go.

**6** Now, it's time to install the Fassadenecke corners. First, remove the backing from the surface that will adhere to the window ledge.

## GUTEX Implio®-F Installation Instructions

### Installing Fassadenecke and Fensterecke Corners



**1** Fit the adhesive Fassadenecke in the corner and work outward from the corner smoothing out any air pockets, making sure the tape's underside adheres to the window ledge substrate.

**2** Remove the corner tape's backing from the section that adheres to the reveal.

**3** Press the Fassadenecke into the corner and work upwards from the sill, adhering the reveal section.

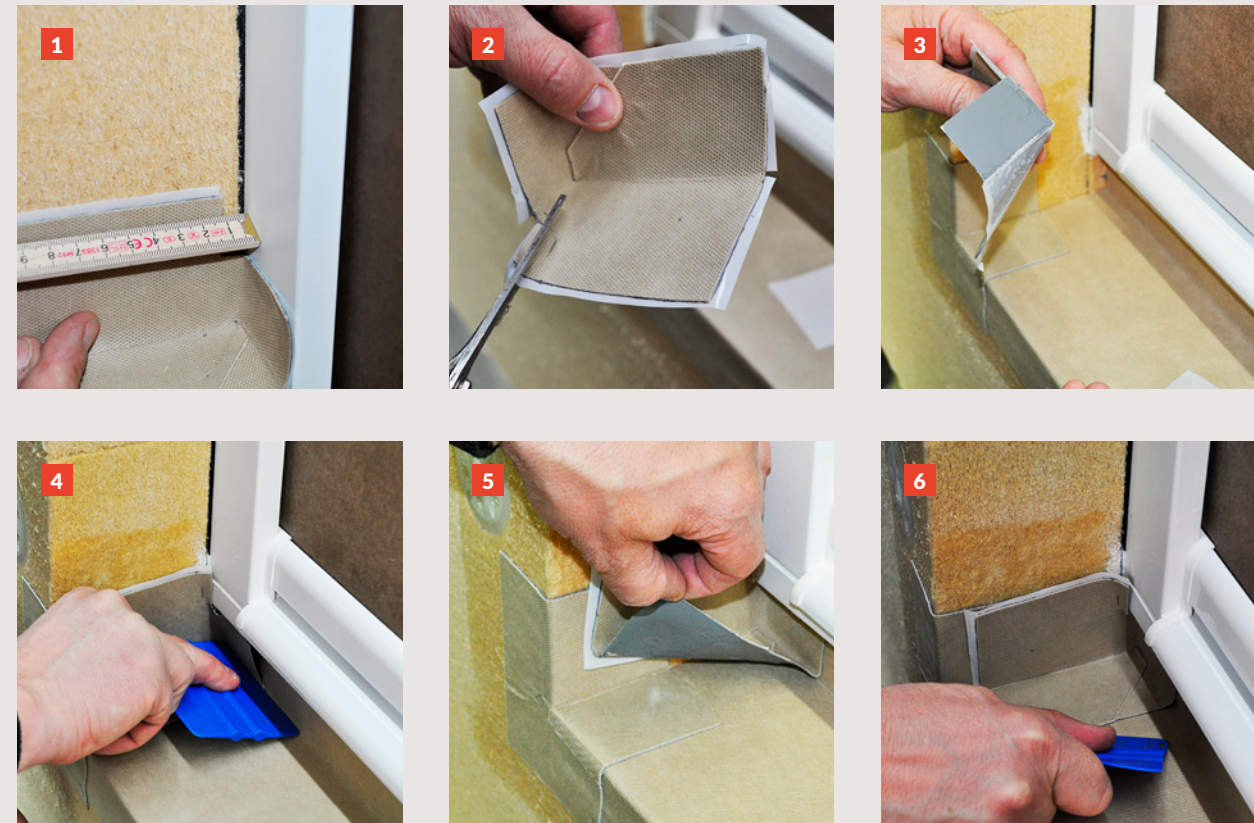
**4 + 5** Now, remove the backing from the front section and smooth into place on the wall's outer surface.

**6** Now, it's time to install the Fassadenecke back corner seals. To begin, measure the distance the window extends beyond the frame. Transpose this to the back corner seals.



## GUTEX Implio®-F Installation Instructions

### Installing the Fensterecke



**1 + 2** When you notch out the corner, be careful to cut off 1 mm less from the depth (as opposed to the height) to ensure the perfect fit to window and insulation.

**3 + 4** Remove the backing from the section facing the window and press properly into place.

**5 + 6** Remove the backing for the window ledge (Folienkeilplatte) and press from the corner outwards. The Fensterecke must overlap the Fassadenecke, which you have already installed, by at least 30 mm.

## GUTEX Implio®-F Installation Instructions

### Installing the Fensterecke and Tropfband



**1** Remove the backing from the reveal section and press to smooth from the corner outward.

**2** Press the Fensterecke so it firmly adheres in the corner and to the window frame.

**3** Apply a bead of Implio® Dichtkleber to the joint between the Fensterecke corner seal and the window frame for additional protection. (You may wish to consider applying masking tape to the window frame before applying the caulking, in order to limit the unwanted spread of caulking.)

**4 + 5** ETICS:

Remove the backing from the Tropfband (drip tape). Make sure both sides fit exactly, sticking the tape to the Folienkeilplatte while maintaining the 10-mm (marked) overhang.

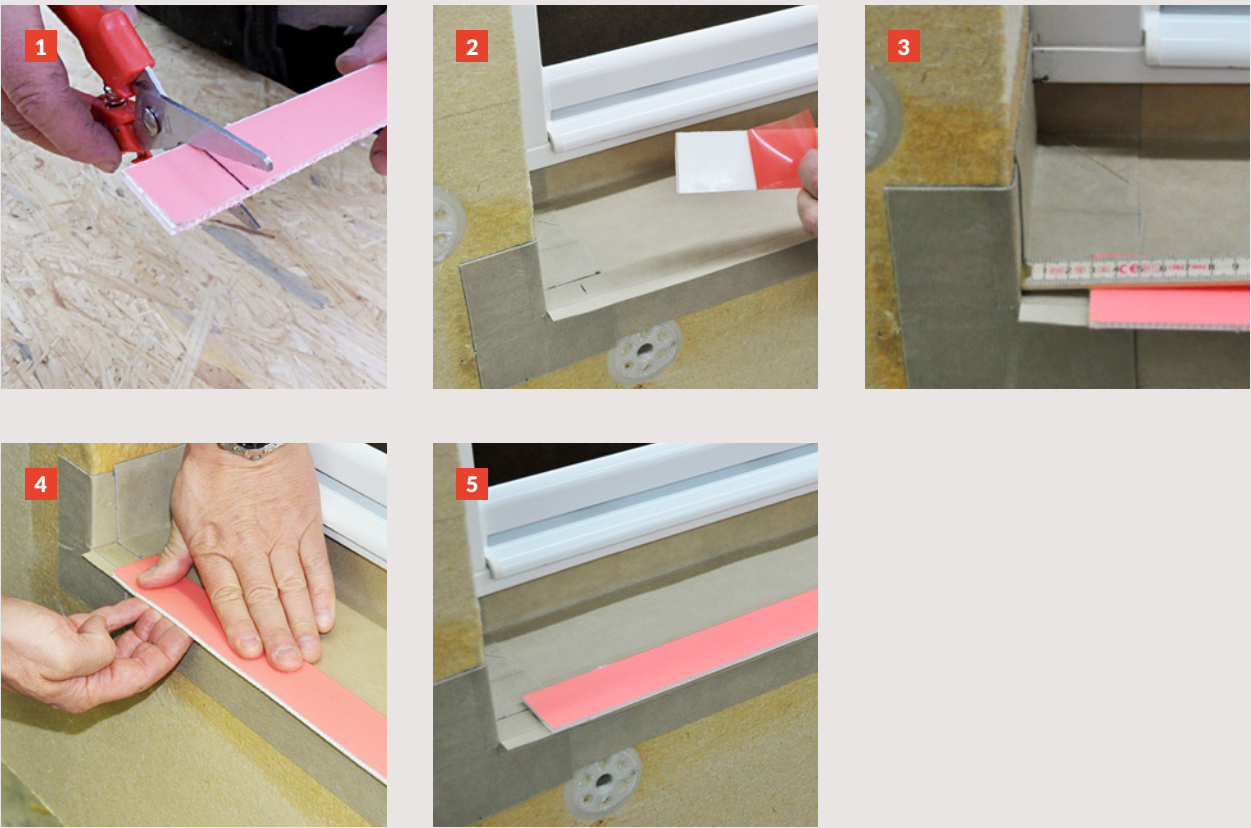
#### NOTE

The overhanging drip tape prevents water from accessing render applied later.



# GUTEX Implio®-F Installation Instructions

## Installing the Hinterlüftungsprofil



Before you install the window ledge, you need to install the adhesive-backed Hinterlüftungsprofil (vent).

**1** Cut the Hinterlüftungsprofil to the required length. You need to allow enough space on the ends to accommodate the ledge cover underlay or alternative elements.

Remove the backing from the Hinterlüftungsprofil and attach as per ledge cover underlay position markings.

Stick the Hinterlüftungsprofil to the overhanging portion of the Tropfband (drip tape).

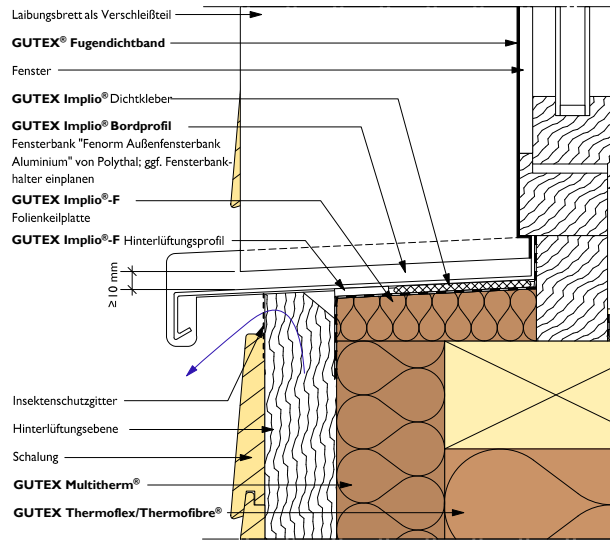
Press from below the overhanging part of the drip tape onto the Hinterlüftungsprofil.

**5** Upon completion, the Tropfband and Hinterlüftungsprofil will have approx. 10 mm overhang.

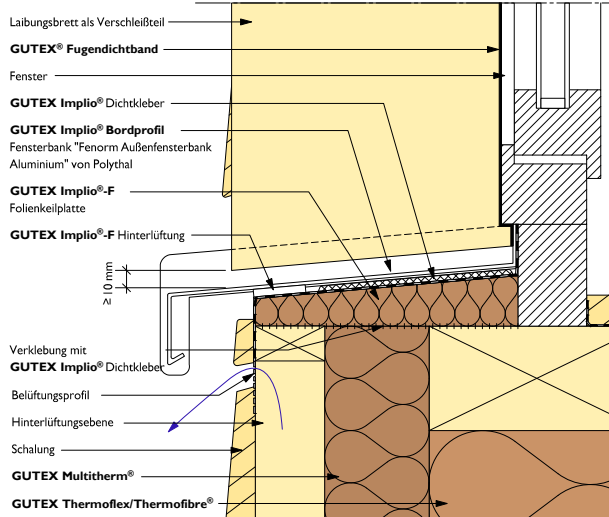
**NOTE (ETICS):**  
When the final render has been applied, the Hinterlüftungsprofil is flush with the render and will remain visible.

## GUTEX Implio®-F Details

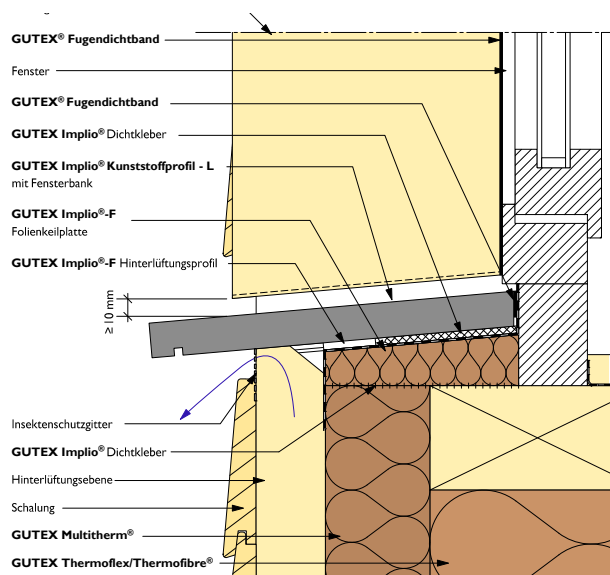
2.2.504 Rainscreen with Trimmed Keilplatte (ledge insulation)



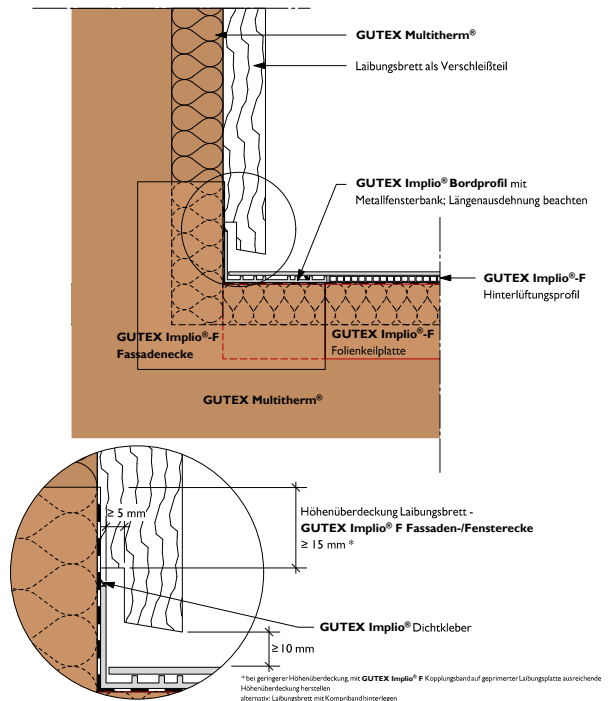
2.2.505 Rainscreen with Overhanging Keilplatte (ledge insulation)



2.2.506 Rainscreen with Overhanging Keilplatte (ledge insulation)



2.2.507 Rainscreen with Metal Window Ledges

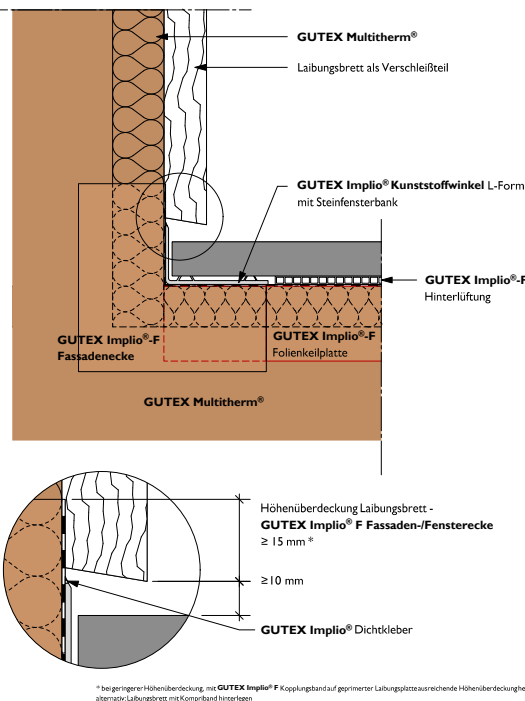


**NOTE**  
The details you find here are schematic diagrams and represent general suggestions for your planning convenience. The determination of their application suitability and completeness for each use is the responsibility of the contractor, architect or consumer. Adjacent installations by other trades that appear in the diagrams are solely representational. All requirements and assumptions must be adapted to the site's conditions and approved by the applicable authorities. All technical specifications found in Data Sheets or approved system documentation fully apply. Although all of the information was current at the time of its publication, the publication of superseding information renders the old information invalid.

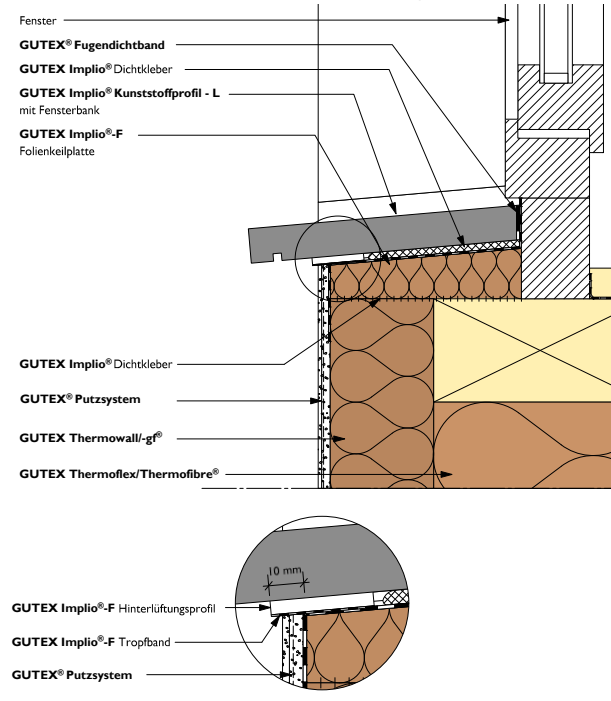
**Installing Window Ledges**  
Apply 6-8 mm beads of GUTEX Implio Dichtkleber® every 15-20 cm to the surface of the Folienkeilplatte approx. 2-3 cm from the joint adjacent to the window to 1 cm from the Hinterlüftungsprofil. Remove the backing and press the window ledge on to the adhesive.

# GUTEX Implio®-F Details

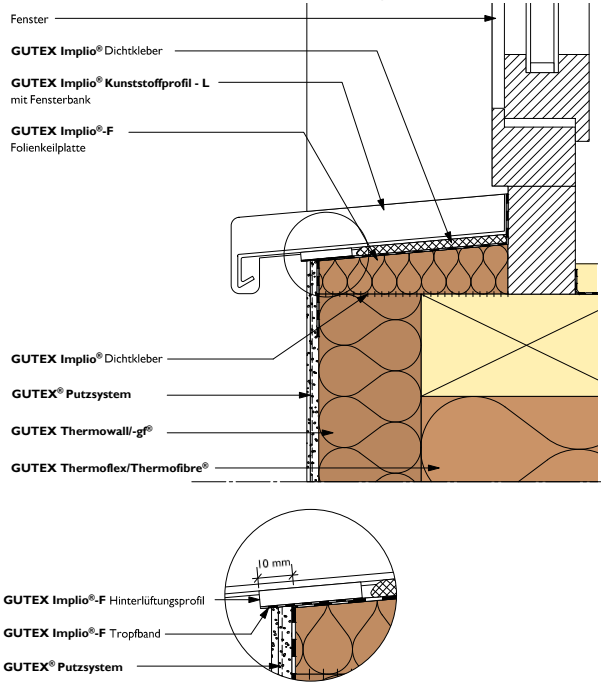
2.2.508 Rainscreen with Masonry Window Ledges



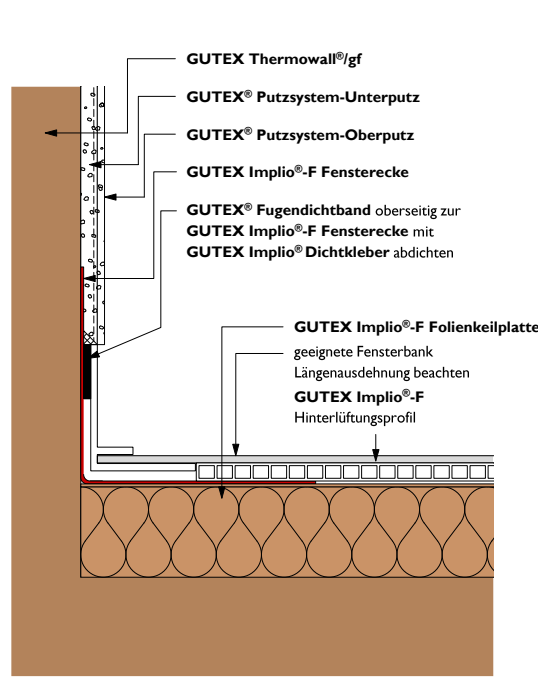
2.1.507 ETICS with Masonry Window Ledges



2.1.508 ETICS with Metal Window Ledges



2.1.510 ETICS

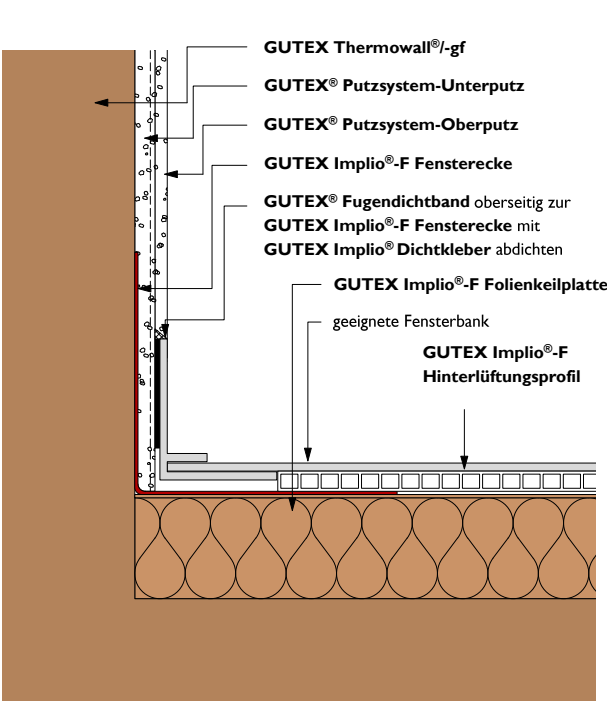


**NOTE**  
The details you find here are schematic diagrams and represent general suggestions for your planning convenience. The determination of their application suitability and completeness for each use is the responsibility of the contractor, architect or consumer. Adjacent installations by other trades that appear in the diagrams are solely representational. All requirements and assumptions must be adapted to the site's conditions and approved by the applicable authorities. All technical specifications found in Data Sheets or approved system documentation fully apply. Although all of the information was current at the time of its publication, the publication of superseding information renders the old information invalid.

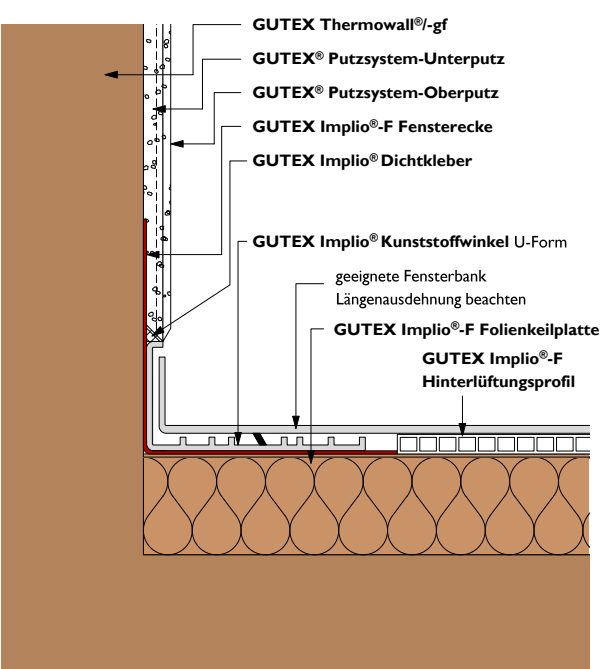
**Installing Window Ledges**  
Apply 6-8 mm beads of GUTEX Implio Dichtkleber® every 15-20 cm to the surface of the Folienkeilplatte approx. 2-3 cm from the joint adjacent to the window to 1 cm from the Hinterlüftungsprofil. Remove the backing and press the window ledge on to the adhesive.

# GUTEX Implio®-F Details

2.1.511 ETICS



2.1.512 ETICS with Kunststoffwinkel U-Form (u-shaped plastic angle)



You will find these and details for other applications and products on our Web site:  
[www.gutex.de/service/konstruktionsdetails](http://www.gutex.de/service/konstruktionsdetails)

**NOTE**  
The details you find here are schematic diagrams and represent general suggestions for your planning convenience. The determination of their application suitability and completeness for each use is the responsibility of the contractor, architect or consumer. Adjacent installations by other trades that appear in the diagrams are solely representational. All requirements and assumptions must be adapted to the site's conditions and approved by the applicable authorities. All technical specifications found in Data Sheets or approved system documentation fully apply. Although all of the information was current at the time of its publication, the publication of superseding information renders the old information invalid.

**Installing Window Ledges**  
Apply 6-8 mm beads of GUTEX Implio Dichtkleber® every 15-20 cm to the surface of the Folienkeilplatte approx. 2-3 cm from the joint adjacent to the window to 1 cm from the Hinterlüftungsprofil. Remove the backing and press the window ledge on to the adhesive.

Notes

.....

.....

.....

.....

.....

.....

.....

.....

.....

.....

.....

.....

.....

.....

.....

.....

.....

.....

.....

.....

.....

Notes

.....

.....

.....

.....

.....

.....

.....

.....

.....

.....

.....

.....

.....

.....

.....

.....

.....

.....

.....

.....

.....





#### Insulation in summer

GUTEX wood insulation boards protect living areas from high temperatures, in particular, areas under roofs. Thanks to their high thermal storage capacity, they effectively dampen the flow of warmth from exterior to interior areas. Wood has a specific thermal storage capacity of 2100 J/kgK, which is the highest amongst all insulation materials.



#### Insulation in winter

Effective insulation reduces heating bills and creates a comfortable living environment in winter. Due to their low thermal conductivity (e.g. GUTEX Thermosafe-homogen has  $\lambda_D = 0.037$  W/mK), GUTEX insulating wood fibreboards provide optimum insulation in winter, protecting the interior of houses from heat loss and ingress of cold.



#### Pleasant indoor climate

GUTEX wood fibre insulation boards permit diffusion ( $\mu$  value = 3) and regulate the interior relative humidity by virtue of their ability to absorb and release up to 15 % of their weight in moisture without the loss of insulation capacity. These two functions improve the living environment of indoor areas significantly.



#### Acoustic insulation

The open-pore structure of GUTEX wood fibreboards and their high absorption volume contribute to their ability to deliver superb soundproofing against airborne and impact noise.



#### Fire protection

GUTEX wood fibre insulation boards easily comply with fire protection regulations. Various individual certificates of approval are available for REI 30 to REI 90 fire resistance ratings for roof and wall structures.



#### Environmental compatibility

The raw material for all GUTEX insulation boards comes from wood that is locally harvested and grown using sustainable forestry management practices. GUTEX exclusively uses untreated chips and shavings from spruce and fir, which are by-products obtained from other timber manufacturing processes. All GUTEX insulation boards are tested and certified as biologically safe and compatible with other building materials (natureplus© seal of quality).



#### Recyclability

GUTEX wood fibreboard is completely recyclable and, provided wood preservatives have not contaminated it, can be disposed of at the nearest recovery centre.



#### User friendly

GUTEX insulation boards are manufactured according to the highest quality standards and exhibit absolutely minimum dimensional deviation. This, combined with the detailed installation instructions the manufacturer provides, makes working with GUTEX products a pleasure.



#### Made in Germany

For more than 85 years, GUTEX, a family owned and operated company, has manufactured insulation boards at its plant in Waldshut-Tiengen, which is located in the southern Black Forest. All GUTEX insulation boards carry the CE mark and are produced according to the current applicable standards. Moreover, the German building authorities have issued a European Technical Approval for GUTEX's Thermowall External Thermal Insulation Composite System (ETICS).

#### GUTEX customer service

An important part of GUTEX's customer service is our qualified assistance. Whether you require help with a private single-family house or commercial property, GUTEX's trained and qualified staff will gladly assist you. If you have technical queries, please contact our technical assistance department by phone +420 602 759 917, or per e-mail at [info@gutexczech.com](mailto:info@gutexczech.com).

#### GUTEX product training and useful talks

Architects, craftsmen, wholesalers, sales staffs and developers can benefit from the workshops GUTEX offers, which address specific topics, including building science, construction techniques, product applications, etc. Visit our Web site for further information or give us a call.